

## Compact Digital Conference System



# HCS-3900 Series Compact Digital Conference System

<b>HCS-3938 Series Conference Units</b> .....		<b>2</b>
HCS-3938C_D	Compact Digital Conference System Chairman Unit (tabletop, charcoal gray panel + black base, charcoal gray button, stem microphone to be ordered separately).....	2
HCS-3938C_S	Compact Digital Conference System Chairman Unit (tabletop, champagne panel + black base, white button, stem microphone to be ordered separately).....	2
HCS-3938CF_S	Compact Digital Conference System Chairman Unit (tabletop, champagne panel + black base, white button, fixed gooseneck).....	4
HCS-3938D_S	Compact Digital Conference System Delegate Unit (tabletop, champagne panel + black base, white button, stem microphone to be ordered separately).....	6
HCS-3938D_D	Compact Digital Conference System Delegate Unit (tabletop, charcoal gray panel + black base, charcoal gray button, stem microphone to be ordered separately).....	6
HCS-3938DF_S	Compact Digital Conference System Delegate Unit (tabletop, champagne panel + black base, white button, fixed gooseneck).....	9
<b>HCS-3940 Series Conference Units</b> .....		<b>10</b>
HCS-3940C	Compact Digital Conference System Chairman Unit (stem microphone to be ordered separately).....	10
HCS-3940D	Compact Digital Conference System Delegate Unit (stem microphone to be ordered separately).....	12
<b>HCS-3900M/20 Series Compact Digital Conference System Main Units</b> .....		<b>13</b>
HCS-3900MA/20	Compact Digital Conference System Main Unit (discussion, recording, 256x64 OLED, 6P sockets).....	13
HCS-3900MB/20	Compact Digital Conference System Main Unit (discussion, 256x64 OLED, 6P sockets).....	15
<b>Stem microphone</b> .....		<b>M.1</b>

## HCS-3938C Chairman Unit



### Features

- Stylish and ergonomic design
- Smaller, compact and practical, convenient for transportation
- Connection cable is routed from the bottom through the hole in the table for a tidy desktop
- Fully digital audio technology
- Hi-Fi loudspeaker
- Priority key and Next key
- Excellent immunity to RF interference from mobile phones
- Supporting "PnP" (plug and play)

The stylish and ergonomically designed chairman unit has all the necessary facilities to enable the user to chair a conference. It has excellent immunity to RF interference from mobile phones. Similar in appearance to HCS-3938D Delegate Unit, the HCS-3938C Chairman Unit includes a microphone priority button. When pressed, the priority button causes all currently active delegate microphones to be switched off temporarily or permanently, allowing the chairman to take control of the meeting. The loudspeaker offers superior acoustics with minimal feedback for enhanced intelligibility.

### Functions

- Compliant to ISO22259
- Gain of each microphone adjustable separately, fitting the individual orator's voice to achieve perfect speech pickup any time
- Integrated high-pass filter (low-cut switch) to cut low frequency elements from the audio when needed
- Excellent immunity to RF interference from mobile phones and comparable devices
- Equipped with 5PIN microphone socket, stem microphone to be ordered separately, MS\*\*E type stem microphone is suitable
- Stem microphone can be unplugged during adjournment, easy to maintain
- Hi-Fi loudspeaker, minimal feedback, mutes automatically when microphone is active
- Microphone On/Off button
- Every conference unit is assigned an individual serial number, and its ID can be assigned automatically or manually through conference system
- System when operated in stand-alone mode can implement the following facilities:
  - ◆ "ACTIVE MICS", set the number of delegates permitted to speak at the same time
  - ◆ "OPEN" mode, microphone key with request-to-speak registration (AUTO)
  - ◆ "OVERRIDE" mode, microphone key control with override of the active microphones (FIFO)
  - ◆ "VOICE" mode, microphone activation on speaking
  - ◆ "APPLY" mode, delegate applies to speak by pressing apply key, delegate can speak only when operator or chairman approved his application
  - ◆ "PTT" mode, press microphone On/Off button to talk
- Automatic video tracking, when cooperating with camera and video switcher unit
- Activation at any time (if the amount of active microphones in the system is less than 6, except "VOICE" mode)
- Priority key can switch off or mute the speaking units according to preset
- Approves/denies all delegates' speaking requests
- System supports up to 100 chairman units, while only one chairman unit has the control facilities listed above (set by main unit)

### Controls and Indicators

- Headphone volume up and down buttons
- Microphone On/Off button with indicator
- Priority key with indicator
- Next key with indicator

### Interconnections

- Socket for pluggable stem microphone
- Ø 3.5 mm stereo headphone jack
- 1.5 m cable with 6P-DIN plug
- 0.6 m cable with 6P-DIN socket

**Technical Specifications**

**Electrical**

Max. consumption.....2 W

**Headphone connection**

Frequency response.....40 Hz to 16 kHz

Earphone load impedance.....≥16 Ohm

Earphone output.....10 mW

**Interface data**

Connector.....Ø 3.5 mm stereo jack for headphone

**Mechanical**

Mounting.....Tabletop

Dimensions (h x w x d) (w/o stem microphone)...71 x 124 x 138 mm

Weight (incl. stem microphone).....0.9 kg

Color.....Charcoal gray (PANTONE Cool Gray 11 C) panel  
+ black (PANTONE 419 C) base

.....Champagne (PANTONE 401 C) panel  
+ black (PANTONE 419 C) base

**Ordering Information**

HCS-3938C\_D.....Compact Digital Conference System  
Chairman Unit (tabletop, charcoal gray  
panel + black base, charcoal gray  
button, stem microphone to be ordered  
separately)

HCS-3938C\_S.....Compact Digital Conference System  
Chairman Unit (tabletop, champagne  
panel + black base, white button, stem  
microphone to be ordered separately)

## HCS-3938CF Chairman Unit



### Features

- Stylish and ergonomic design
- Smaller, compact and practical, convenient for transportation
- Connection cable is routed from the bottom through the hole in the table for a tidy desktop
- Fully digital audio technology
- Hi-Fi loudspeaker
- Priority key and Next key
- Fixed stem microphone
- Excellent immunity to RF interference from mobile phones
- Supporting "PnP" (plug and play)

The stylish and ergonomically designed chairman unit has all the necessary facilities to enable the user to chair a conference. It has excellent immunity to RF interference from mobile phones. Similar in appearance to HCS-3938DF Delegate Unit, the HCS-3938CF Chairman Unit includes a microphone priority button. When pressed, the priority button causes all currently active delegate microphones to be switched off temporarily or permanently, allowing the chairman to take control of the meeting. The loudspeaker offers superior acoustics with minimal feedback for enhanced intelligibility.

### Functions

- Compliant to ISO22259
- Gain of each microphone adjustable separately, fitting the individual orator's voice to achieve perfect speech pickup any time
- Integrated high-pass filter (low-cut switch) to cut low frequency elements from the audio when needed
- Excellent immunity to RF interference from mobile phones and comparable devices
- Mini-microphone, with foam windshield
- Hi-Fi loudspeaker, minimal feedback, mutes automatically when microphone is active
- Microphone On/Off button
- Every conference unit is assigned an individual serial number, and its ID can be assigned automatically or manually through conference system
- System when operated in stand-alone mode can implement the following facilities:
  - ◆ "ACTIVE MICS", set the number of delegates permitted to speak at the same time
  - ◆ "OPEN" mode, microphone key with request-to-speak registration (AUTO)
  - ◆ "OVERRIDE" mode, microphone key control with override of the active microphones (FIFO)
  - ◆ "VOICE" mode, microphone activation on speaking
  - ◆ "APPLY" mode, delegate applies to speak by pressing apply key, delegate can speak only when operator or chairman approved his application
  - ◆ "PTT" mode, press microphone On/Off button to talk
- Automatic video tracking, when cooperating with camera and video switcher unit
- Activation at any time (if the amount of active microphones in the system is less than 6, except "VOICE" mode)
- Priority key can switch off or mute the speaking units according to preset
- Approves/denies all delegates' speaking requests
- System supports up to 100 chairman units, while only one chairman unit has the control facilities listed above (set by main unit)

### Controls and Indicators

- Uni-directional electret condenser microphone with two-color illuminated ring
- Headphone volume up and down buttons
- Microphone On/Off button with indicator
- Priority key with indicator
- Next key with indicator

### Interconnections

- Ø 3.5 mm stereo headphone jack
- 1.5 m cable with 6P-DIN plug
- 0.6 m cable with 6P-DIN socket

**Technical Specifications**

**Electrical**

Max. consumption.....2 W

**Headphone connection**

Frequency response.....40 Hz to 16 kHz

Earphone load impedance.....≥16 Ohm

Earphone output.....10 mW

**Microphone**

Transducer.....Electret-condenser

Polar pattern.....Uni-directional

Sensitivity.....-46 dBV/Pa

Frequency response.....80 Hz to 18 kHz

Input impedance.....2 kOhm

Directivity 0°/180°.....≥ 20 dB (1 kHz)

Equivalent noise.....20 dBA (SPL)

Maximum sound pressure level.....125 dB (THD<3%)

**Interface data**

Connector.....Ø 3.5 mm stereo jack for headphone

**Mechanical**

Mounting.....Tabletop

Dimensions (h x w x d).....71 x 124 x 138 mm

Weight.....0.9 kg

Color.....Champagne (PANTONE 401 C) panel  
+ black (PANTONE 419 C) base

Stem length.....410 mm

**Ordering Information**

HCS-3938CF\_S.....Compact Digital Conference System  
Chairman Unit (tabletop,  
champagne panel + black base,  
white button, fixed gooseneck)

## HCS-3938D Delegate Unit



### Features

- Stylish and ergonomic design
- Smaller, compact and practical, convenient for transportation
- Connection cable is routed from the bottom through the hole in the table for a tidy desktop
- Fully digital audio technology
- Hi-Fi loudspeaker
- Excellent immunity to RF interference from mobile phones
- Supporting "PnP" (plug and play)

The delegate unit meets the basic demands of the conferences. It provides facilities for speaking, registering a request-to-speak and listening. It has excellent immunity to RF interference from mobile phones. The loudspeaker offers superior acoustics with minimal feedback for enhanced intelligibility.

### Functions

- Compliant to ISO 22259
- Gain of each microphone adjustable separately, fitting the individual orator's voice to achieve perfect speech pickup any time
- Integrated high-pass filter (low-cut switch) to cut low frequency elements from the audio when needed
- Excellent immunity to RF interference from mobile phones and comparable devices
- Equipped with 5PIN microphone socket, stem microphone to be ordered separately, MS\*\*E type stem microphone is suitable
- Stem microphone can be unplugged during adjournment, easy to maintain
- Hi-Fi loudspeaker, minimal feedback, mutes automatically when microphone is active
- Microphone On/Off button
- Every conference unit is assigned an individual serial number, and its ID can be assigned automatically or manually through conference system
- System when operated in stand-alone mode can implement the following facilities:
  - ◆ "ACTIVE MICS", set the number of delegates permitted to speak at the same time
  - ◆ "OPEN" mode, microphone key with request-to-speak registration (AUTO)
  - ◆ "OVERRIDE" mode, microphone key control with override of the active microphones (FIFO)
  - ◆ "VOICE" mode, microphone activation on speaking
  - ◆ "APPLY" mode, delegate applies to speak by pressing apply key, delegate can speak only when operator or chairman approved his application
  - ◆ "PTT" mode, press microphone On/Off button to talk
- Automatic video tracking, when cooperating with camera and video switcher unit
- Set any delegate unit to be VIP unit
  - ◆ Up to 32 units can be set as VIP in one system via application software
  - ◆ VIP unit can be activated as long as the total of active microphones is not beyond 6 (incl. chairman/delegate/VIP unit, except "VOICE" mode)

### Controls and Indicators

- Headphone volume up and down buttons
- Microphone On/Off button with indicator

### Interconnections

- Socket for pluggable stem microphone
- Ø 3.5 mm stereo headphone jack
- 1.5 m cable with 6P-DIN plug
- 0.6 m cable with 6P-DIN socket

**Technical Specifications**

**Electrical**

Max. consumption.....2 W

**Headphone connection**

Frequency response.....40 Hz to 16 kHz

Earphone load impedance.....≥16 Ohm

Earphone output.....10 mW

**Interface data**

Connector.....Ø 3.5 mm stereo jack for headphone

**Mechanical**

Mounting.....Tabletop

Dimensions (h x w x d).....71 x 124 x 138 mm

Weight.....0.9 kg

Color.....Charcoal gray (PANTONE Cool Gray 11 C) panel  
+ black (PANTONE 419 C) base

.....Champagne (PANTONE 401 C) panel  
+ black (PANTONE 419 C) base

**Ordering Information**

HCS-3938D\_D..... Compact Digital Conference System Delegate  
Unit (tabletop, charcoal gray panel + black  
base, charcoal gray button)

HCS-3938D\_S..... Compact Digital Conference System Delegate  
Unit (tabletop, champagne panel + black base,  
white button)



## HCS-3938DF Delegate Unit



### Features

- Stylish and ergonomic design
- Smaller, compact and practical, convenient for transportation
- Connection cable is routed from the bottom through the hole in the table for a tidy desktop
- Fully digital audio technology
- Hi-Fi loudspeaker
- Fixed stem microphone
- Excellent immunity to RF interference from mobile phones
- Supporting “PnP” (plug and play)

The delegate unit meets the basic demands of the conferences. It provides facilities for speaking, registering a request-to-speak and listening. It has excellent immunity to RF interference from mobile phones. The loudspeaker offers superior acoustics with minimal feedback for enhanced intelligibility.

### Functions

- Compliant to ISO 22259
- Gain of each microphone adjustable separately, fitting the individual orator’s voice to achieve perfect speech pickup any time
- Integrated high-pass filter (low-cut switch) to cut low frequency elements from the audio when needed
- Excellent immunity to RF interference from mobile phones and comparable devices
- Mini-microphone, with foam windshield
- Hi-Fi loudspeaker, minimal feedback, mutes automatically when microphone is active
- Microphone On/Off button
- Every conference unit is assigned an individual serial number, and its ID can be assigned automatically or manually through conference system

- System when operated in stand-alone mode can implement the following facilities:
  - ◆ “ACTIVE MICS”, set the number of delegates permitted to speak at the same time
  - ◆ “OPEN” mode, microphone key with request-to-speak registration (AUTO)
  - ◆ “OVERRIDE” mode, microphone key control with override of the active microphones (FIFO)
  - ◆ “VOICE” mode, microphone activation on speaking
  - ◆ “APPLY” mode, delegate applies to speak by pressing apply key, delegate can speak only when operator or chairman approved his application
  - ◆ “PTT” mode, press microphone On/Off button to talk
- Automatic video tracking, when cooperating with camera and video switcher unit
- Set any delegate unit to be VIP unit
  - ◆ Up to 32 units can be set as VIP in one system via application software
  - ◆ VIP unit can be activated as long as the total of active microphones is not beyond 6 (incl. chairman/delegate/VIP unit, except “VOICE” mode)

### Controls and Indicators

- Uni-directional electret condenser microphone with two-color illuminated ring
- Headphone volume up and down buttons
- Microphone On/Off button with indicator

### Interconnections

- Ø 3.5 mm stereo headphone jack
- 1.5 m cable with 6P-DIN plug
- 0.6 m cable with 6P-DIN socket

### Technical Specifications

#### Electrical

Max. consumption..... 2 W

#### Headphone connection

Frequency response..... 40 Hz to 16 kHz

Earphone load impedance..... ≥16 Ohm

Earphone output..... 10 mW

#### Microphone

Transducer..... Electret-condenser

Polar pattern..... Uni-directional

Sensitivity..... -46 dBV/Pa

Frequency response..... 80 Hz to 18 kHz

Input impedance..... 2 kOhm

Directivity 0°/180°..... ≥ 20 dB (1 kHz)

Equivalent noise..... 20 dBA (SPL)

Maximum sound pressure level..... 125 dB (THD<3%)

#### Interface data

Connector..... Ø 3.5 mm stereo jack for headphone

**Mechanical**

Mounting.....Tabletop  
Dimensions (h x w x d).....71 x 124 x 138 mm  
Weight.....0.9 kg  
Color.....Champagne (PANTONE 401 C) panel  
+ black (PANTONE 419 C) base  
Stem length.....410 mm

---

**Ordering Information**

HCS-3938DF\_S.....Compact Digital Conference System  
Delegate Unit (tabletop, champagne  
panel + black base, white button, fixed  
gooseneck)

## HCS-3940C Chairman Unit



### Features

- Stylish and ergonomic design
- Smaller, compact and practical, convenient for transportation
- Connection cable is routed from the bottom through the hole in the table for a tidy desktop
- Fully digital audio technology
- Hi-Fi loudspeaker
- Priority key and Next key
- Excellent immunity to RF interference from mobile phones
- Supporting “PnP” (plug and play)

The stylish and ergonomically designed chairman unit has all the necessary facilities to enable the user to chair a conference. It has excellent immunity to RF interference from mobile phones. Similar in appearance to HCS-3940D Delegate Unit, the HCS-3940C Chairman Unit includes a microphone priority button. When pressed, the priority button causes all currently active delegate microphones to be switched off temporarily or permanently, allowing the chairman to take control of the meeting. The loudspeaker offers superior acoustics with minimal feedback for enhanced intelligibility.

### Functions

- Compliant to ISO22259
- Gain of each microphone adjustable separately, fitting the individual orator's voice to achieve perfect speech pickup any time
- Integrated high-pass filter (low-cut switch) to cut low frequency elements from the audio when needed
- Excellent immunity to RF interference from mobile phones and comparable devices
- Equipped with 5PIN microphone socket, stem microphone to be ordered separately, MS\*\*E type stem microphone is suitable
- Stem microphone can be unplugged during adjournment, easy to maintain
- Hi-Fi loudspeaker, minimal feedback, mutes automatically when microphone is active
- Microphone On/Off button
- Every conference unit is assigned an individual serial number, and its ID can be assigned automatically or manually through conference system
- System when operated in stand-alone mode can implement the following facilities:
  - ◆ “ACTIVE MICS”, set the number of delegates permitted to speak at the same time
  - ◆ “OPEN” mode, microphone key with request-to-speak registration (AUTO)
  - ◆ “OVERRIDE” mode, microphone key control with override of the active microphones (FIFO)
  - ◆ “VOICE” mode, microphone activation on speaking
  - ◆ “APPLY” mode, delegate applies to speak by pressing apply key, delegate can speak only when operator or chairman approved his application
  - ◆ “PTT” mode, press microphone On/Off button to talk
- Automatic video tracking, when cooperating with camera and video switcher unit
- Activation at any time (if the amount of active microphones in the system is less than 6, except “VOICE” mode)
- Priority key can switch off or mute the speaking units according to preset
- Approves/denies all delegates' speaking requests
- System supports up to 6 chairman units, while only one chairman unit has the control facilities listed above (set by main unit)

### Controls and Indicators

- Headphone volume up and down buttons
- Microphone On/Off button with indicator
- Priority key with indicator
- Next key with indicator

### Interconnections

- Socket for pluggable stem microphone
- Ø 3.5 mm stereo headphone jack
- 1.5 m cable with 6P-DIN plug
- 0.6 m cable with 6P-DIN socket

---

**Technical Specifications**

**Electrical**

Max. consumption.....2 W

**Headphone connection**

Frequency response.....40 Hz to 16 kHz

Earphone load impedance.....≥16 Ohm

Earphone output.....10 mW

**Interface data**

Connector.....Ø 3.5 mm stereo jack for headphone

**Mechanical**

Mounting.....Tabletop

Dimensions (h x w x d) .....66x99x143 mm

Weight .....0.9 kg

Color.....Charcoal gray (PANTONE Cool Gray 11 C) panel  
+ black (PANTONE 419 C) base

---

**Ordering Information**

HCS-3940C.....Compact Digital Conference System  
Chairman Unit

## HCS-3940D Delegate Unit



### Features

- **Stylish and ergonomic design**
- **Smaller, compact and practical, convenient for transportation**
- **Connection cable is routed from the bottom through the hole in the table for a tidy desktop**
- **Fully digital audio technology**
- **Hi-Fi loudspeaker**
- **Excellent immunity to RF interference from mobile phones**
- **Supporting “PnP” (plug and play)**

The delegate unit meets the basic demands of the conferences. It provides facilities for speaking, registering a request-to-speak and listening. It has excellent immunity to RF interference from mobile phones. The loudspeaker offers superior acoustics with minimal feedback for enhanced intelligibility.

### Functions

- Compliant to ISO 22259
- Gain of each microphone adjustable separately, fitting the individual orator’s voice to achieve perfect speech pickup any time
- Integrated high-pass filter (low-cut switch) to cut low frequency elements from the audio when needed
- Excellent immunity to RF interference from mobile phones and comparable devices
- Equipped with 5PIN microphone socket, stem microphone to be ordered separately, MS\*\*E type stem microphone is suitable
- Stem microphone can be unplugged during adjournment, easy to maintain
- Hi-Fi loudspeaker, minimal feedback, mutes automatically when microphone is active
- Microphone On/Off button
- Every conference unit is assigned an individual serial number, and its ID can be assigned automatically or manually through conference system

- System when operated in stand-alone mode can implement the following facilities:
  - ◆ “ACTIVE MICS”, set the number of delegates permitted to speak at the same time
  - ◆ “OPEN” mode, microphone key with request-to-speak registration (AUTO)
  - ◆ “OVERRIDE” mode, microphone key control with override of the active microphones (FIFO)
  - ◆ “VOICE” mode, microphone activation on speaking
  - ◆ “APPLY” mode, delegate applies to speak by pressing apply key, delegate can speak only when operator or chairman approved his application
  - ◆ "PTT" mode, press microphone On/Off button to talk
- Automatic video tracking, when cooperating with camera and video switcher unit
- Set any delegate unit to be VIP unit
  - ◆ Up to 32 units can be set as VIP in one system via application software
  - ◆ VIP unit can be activated as long as the total of active microphones is not beyond 6 (incl. chairman/delegate/VIP unit, except “VOICE” mode)

### Controls and Indicators

- Headphone volume up and down buttons
- Microphone On/Off button with indicator

### Interconnections

- Socket for pluggable stem microphone
- Ø 3.5 mm stereo headphone jack
- 1.5 m cable with 6P-DIN plug
- 0.6 m cable with 6P-DIN socket

### Technical Specifications

#### Electrical

Max. consumption.....2 W

#### Headphone connection

Frequency response.....40 Hz to 16 kHz

Earphone load impedance.....≥16 Ohm

Earphone output.....10 mW

#### Interface data

Connector.....Ø 3.5 mm stereo jack for headphone

#### Mechanical

Mounting.....Tabletop

Dimensions (h x w x d) .....66×99×143 mm

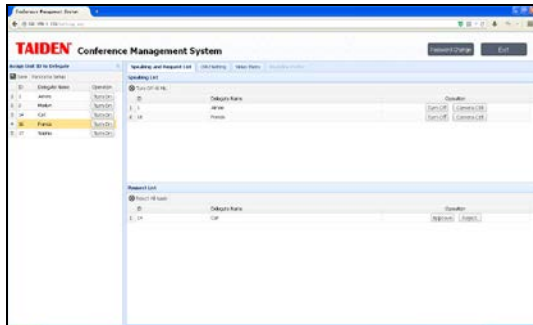
Weight .....0.9 kg

Color.....Charcoal gray (PANTONE Cool Gray 11 C) panel  
+ black (PANTONE 419 C) base

### Ordering Information

HCS-3940D.....Compact Digital Conference System  
Delegate Unit

## HCS-3900MA/20 Conference Main Unit



Web Control Page

### Functions

- Compact and practical, designed for small and medium-sized conference rooms
- Compliant to ISO 22259
- Fully digital conference main unit, audio signals processed by high performance DSP
- Conference audio recording and playback
- With built-in monitor loudspeaker, can be directly employed in small and medium-sized meeting rooms without amplification system
- Every conference unit is assigned an individual ID for convenient setup and to avoid double ID allocation forever
- Set any delegate unit to be VIP unit, VIP unit can be activated as long as the total of active microphones is not beyond 6 (incl. chairman/delegate/VIP unit, except "VOICE" mode)
- Up to 50 contribution units can be connected
- System when operated in stand-alone mode can implement the following facilities:
  - ◆ "ACTIVE MICS", set the number of delegates permitted to speak at the same time
  - ◆ Speaking time limit can be set up (1-240 minutes)
  - ◆ "OPEN" mode, microphone key with request-to-speak registration (AUTO)
  - ◆ "OVERRIDE" mode, microphone key control with override of the active microphones (FIFO)
  - ◆ "VOICE" mode, microphone activation on speaking
  - ◆ "APPLY" mode, delegate applies to speak by pressing apply key, delegate can speak only when operator or chairman approved his application
  - ◆ "PTT" mode, press microphone On/Off button to talk

- With web page control function, the user can access the IP address of main unit from web browser to handle meeting management
- Automatic video tracking, when cooperating with camera and video switcher unit
- Built-in unit detection facilities, detect the unit's LED before the meeting

### Controls and Indicators

- 256x64 OLED displays the status and the menu of system configuration
- Four buttons for configuration
- Power switch with indicator
- Line in volume control buttons
- Master volume control buttons
- Earphone volume control buttons

### Interconnections

- Multiple audio in/out interfaces:
  - ◆ One balanced XLR-type connector for audio line in
  - ◆ Two symmetrical RCA input interfaces for audio line in
  - ◆ One balanced XLRM-type connector for audio line out
  - ◆ Two symmetrical RCA output interfaces for audio line out
  - ◆ One USB interface and one SD card slot for conference audio recording and playback. The audio is recorded as \*.aac file. The recording will switch to the other device when SD card (maximum memory: 64 G) or USB stick (maximum memory: 256 G) is full without interruption
  - ◆ One Mini USB interface realizing quality-lossless sound recording on PC and intact input of streaming audio into the system
- One RS-232 port for connection to central control system
- Video switcher interface
- 2xoutlet (6P-DIN) trunk-line cable outlets
- One USB\_H interface for system upgrading
- Ethernet interface (RJ45)

### Technical Specifications

#### Electrical

Frequency response	40 Hz to 16 kHz
SNR	≥90 dBA
Dynamic range	≥94 dB
THD	≤0.05%
Power supply	AC 100 V -240 V 50 Hz/60 Hz
Power consumption	152 W
RS-232 connection	nine-pole Sub-D female socket

#### Audio inputs

LINE IN 1	+18 dBu, BAL.
LINE IN 2	+18 dBu, UNBAL.

#### Audio outputs

LINE OUT 1	+18 dBu, BAL.
LINE OUT 2	+18 dBu, UNBAL.

**Mechanical**

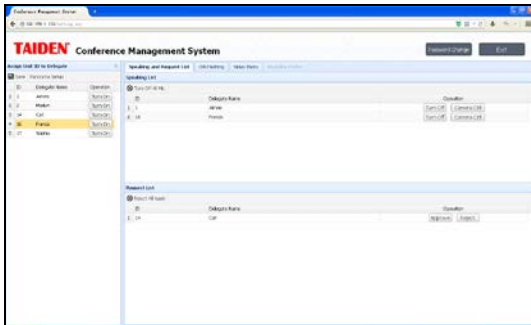
Mounting.....Tabletop or mounted in a 19" rack  
Dimensions (h x w x d).....45 x 483 x 213 mm  
Weight.....3.2 kg  
Color.....Gray (PANTONE 425 C)

---

**Ordering Information**

HCS-3900MA/20.....Compact Digital Conference System  
Main Unit (discussion, recording,  
256x64 OLED, 6P sockets)

## HCS-3900MB/20 Conference Main Unit



Web Control Page

### Functions

- Compact and practical, designed for small and medium-sized conference rooms
- Compliant to ISO 22259
- Fully digital conference main unit, audio signals processed by high performance DSP
- With built-in monitor loudspeaker, can be directly employed in small and medium-sized meeting rooms without amplification system
- Every conference unit is assigned an individual ID for convenient setup and to avoid double ID allocation forever
- Set any delegate unit to be VIP unit, VIP unit can be activated as long as the total of active microphones is not beyond 6 (incl. chairman/delegate/VIP unit, except "VOICE" mode)
- Up to 50 contribution units can be connected
- System when operated in stand-alone mode can implement the following facilities:
  - ◆ "ACTIVE MICS", set the number of delegates permitted to speak at the same time
  - ◆ Speaking time limit can be set up (1-240 minutes)
  - ◆ "OPEN" mode, microphone key with request-to-speak registration (AUTO)
  - ◆ "OVERRIDE" mode, microphone key control with override of the active microphones (FIFO)
  - ◆ "VOICE" mode, microphone activation on speaking
  - ◆ "APPLY" mode, delegate applies to speak by pressing apply key, delegate can speak only when operator or chairman approved his application
  - ◆ "PTT" mode, press microphone On/Off button to talk
- With web page control function, the user can access the IP address of main unit from web browser to handle meeting management
- Automatic video tracking, when cooperating with camera and

video switcher unit

- Built-in unit detection facilities, detect the unit's LED before the meeting

### Controls and Indicators

- 256x64 OLED displays the status and the menu of system configuration
- Four buttons for configuration
- Power switch with indicator
- Line in volume control buttons
- Master volume control buttons
- Earphone volume control buttons

### Interconnections

- Multiple audio input/output interfaces:
  - ◆ One balanced XLR-type connector for audio line in
  - ◆ Two symmetrical RCA input interfaces for audio line in
  - ◆ One balanced XLRM-type connector for audio line out
  - ◆ Two symmetrical RCA output interfaces for audio line out
  - ◆ One Mini USB interface realizing quality-lossless sound recording on PC and intact input of streaming audio into the system
- One RS-232 port for connection to central control system
- Video switcher interface
- 2xoutlet (6P-DIN) trunk-line cable outlets
- One USB interface for system upgrading
- Ethernet interface (RJ45)

### Technical Specifications

#### Electrical

Frequency response.....	40 Hz to 16 kHz
SNR.....	≥90 dBA
Dynamic range.....	≥94 dB
THD.....	≤0.05%
Power supply.....	AC 100 V -240 V 50 Hz/60 Hz
Power consumption.....	152 W
RS-232 connection.....	nine-pole Sub-D female socket

#### Audio inputs

LINE IN 1.....	+18 dBu, BAL.
LINE IN 2.....	+18 dBu, UNBAL.

#### Audio outputs

LINE OUT 1.....	+18 dBu, BAL.
LINE OUT 2.....	+18 dBu, UNBAL.

#### Mechanical

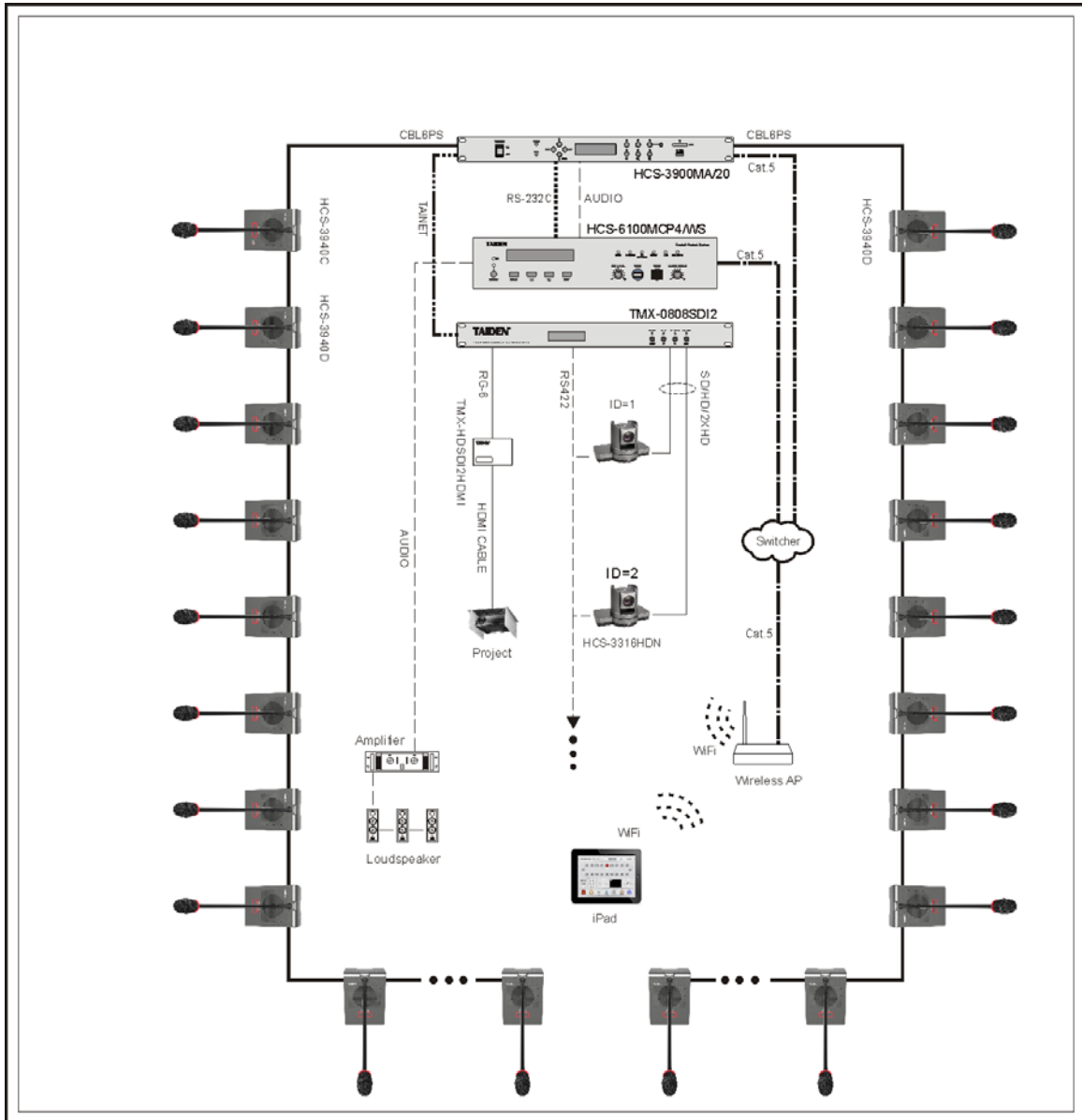
Mounting.....	Tabletop or mounted in a 19" rack
Dimensions (h x w x d).....	45 x 483 x 213 mm
Weight.....	3.2 kg
Color.....	Gray (PANTONE 425 C)

### Ordering Information

HCS-3900MB/20.....	Compact Digital Conference System Main Unit (discussion, 256x64 OLED, 6P sockets)
--------------------	---



System Connection



**Stem microphone**

MS33EGF1S	Stem Microphone (33 cm, semi-rigid gooseneck arm, broadcast quality microphone, with bi-color illuminated ring and lockable windshield, 5pin plug, for HCS-3900, HCS-4100, HCS-4800, HCS-5300, HCS-8300, HCS-8600 series, silver).....	M.4
MS33EGF1B	Stem Microphone (33 cm, semi-rigid gooseneck arm, broadcast quality microphone, with bi-color illuminated ring and lockable windshield, 5pin plug, for HCS-3900, HCS-4100, HCS-4800, HCS-5300, HCS-8300, HCS-8600 series, black).....	M.4
MS41EGF1S	Stem Microphone (41 cm, semi-rigid gooseneck arm, broadcast quality microphone, with bi-color illuminated ring and lockable windshield, 5pin plug, for HCS-3900, HCS-4100, HCS-4800, HCS-5300, HCS-8300, HCS-8600 series, silver).....	M.4
MS41EGF1B	Stem Microphone (41 cm, semi-rigid gooseneck arm, broadcast quality microphone, with bi-color illuminated ring and lockable windshield, 5pin plug, for HCS-3900, HCS-4100, HCS-4800, HCS-5300, HCS-8300, HCS-8600 series, black).....	M.4
MS47EGF1S	Stem Microphone (47 cm, semi-rigid gooseneck arm, broadcast quality microphone, with bi-color illuminated ring and lockable windshield, 5pin plug, for HCS-3900, HCS-4100, HCS-4800, HCS-5300, HCS-8300, HCS-8600 series, silver).....	M.4
MS47EGF1B	Stem Microphone (47 cm, semi-rigid gooseneck arm, broadcast quality microphone, with bi-color illuminated ring and lockable windshield, 5pin plug, for HCS-3900, HCS-4100, HCS-4800, HCS-5300, HCS-8300, HCS-8600 series, black).....	M.4
MS33EGFSS	Stem Microphone (33 cm, fully flexible gooseneck arm, broadcast quality microphone, with bi-color illuminated ring and lockable windshield, 5pin plug, for HCS-3900, HCS-4100, HCS-4800, HCS-5300, HCS-8300, HCS-8600 series, silver).....	M.5
MS33EGFSB	Stem Microphone (33 cm, fully flexible gooseneck arm, broadcast quality microphone, with bi-color illuminated ring and lockable windshield, 5pin plug, for HCS-3900, HCS-4100, HCS-4800, HCS-5300, HCS-8300, HCS-8600 series and HCS-9385 RSI interpreter unit, black).....	M.5
MS50EGF2B	Stem Microphone (50 cm, dual-flex gooseneck arm, broadcast quality microphone, with bi-color illuminated ring and lockable windshield, 5pin plug, for HCS-3900, HCS-4100, HCS-4800, HCS-5300, and HCS-8300 and HCS-8600 series, black).....	M.6
MS60EGF2B	Stem Microphone (60 cm, dual-flex gooseneck arm, broadcast quality microphone, with bi-color illuminated ring and lockable windshield, 5pin plug, for HCS-3900, HCS-4100, HCS-4800, HCS-5300, HCS-8300 and HCS-8600 series, black).....	M.6
MS70EGF2B	Stem Microphone (70 cm, dual-flex gooseneck arm, broadcast quality microphone, with bi-color illuminated ring and lockable windshield, 5pin plug, for HCS-3900, HCS-4100, HCS-4800, HCS-5300, HCS-8300 and HCS-8600 series, black).....	M.6
MS33EGG1B	Stem Microphone (33 cm, semi-rigid gooseneck arm, broadcast quality microphone, with bi-color illuminated ring and lockable windshield, 5pin plug, for HCS-3900, HCS-4100, HCS-4800, HCS-5300, HCS-8300 and HCS-8600 series, black).....	M.7
MS41EGG1B	Stem Microphone (41 cm, semi-rigid gooseneck arm, broadcast quality microphone, with bi-color illuminated ring and lockable windshield, 5pin plug, for HCS-3900, HCS-4100, HCS-4800, HCS-5300, HCS-8300 and HCS-8600 series, black).....	M.7
MS47EGG1B	Stem Microphone (47 cm, semi-rigid gooseneck arm, broadcast quality microphone, with bi-color illuminated ring and lockable windshield, 5pin plug, for HCS-3900, HCS-4100, HCS-4800, HCS-5300, HCS-8300 and HCS-8600 series, black).....	M.7
MS33EHA1B	Stem Microphone (33 cm, semi-rigid gooseneck arm, broadcast quality microphone, 14 mm uni-directional electret condenser microphone, with bi-color illuminated ring and windshield, 5pin plug, for HCS-3900, HCS-4100, HCS-4800, HCS-5300, HCS-8300 and HCS-8600 series, black).....	M.8
MS41EHA1B	Stem Microphone (41 cm, semi-rigid gooseneck arm, broadcast quality microphone, 14 mm uni-directional electret condenser microphone, with bi-color illuminated ring and windshield, 5pin plug, for HCS-3900, HCS-4100, HCS-4800, HCS-5300, HCS-8300 and HCS-8600 series, black).....	M.8

MS47EHA1B	Stem Microphone (47 cm, semi-rigid gooseneck arm, broadcast quality microphone, 14 mm uni-directional electret condenser microphone, with bi-color illuminated ring and windshield, 5pin plug, for HCS-3900, HCS-4100, HCS-4800, HCS-5300, HCS-8300 and HCS-8600 series, black).....	M.8
MS33EGA1S	Stem Microphone (33 cm, semi-rigid gooseneck arm, broadcast quality microphone, with bi-color illuminated ring, built-in windshield, 5pin plug, for HCS-3900, HCS-4100, HCS-4800, HCS-5300, HCS-8300 and HCS-8600 series, silver).....	M.9
MS33EGA1B	Stem Microphone (33 cm, semi-rigid gooseneck arm, broadcast quality microphone, with bi-color illuminated ring, built-in windshield, 5pin plug, for HCS-3900, HCS-4100, HCS-4800, HCS-5300, HCS-8300 and HCS-8600 series, black).....	M.9
MS41EGA1S	Stem Microphone (41 cm, semi-rigid gooseneck arm, broadcast quality microphone, with bi-color illuminated ring, built-in windshield, 5pin plug, for HCS-3900, HCS-4100, HCS-4800, HCS-5300, HCS-8300 and HCS-8600 series, silver).....	M.9
MS41EGA1B	Stem Microphone (41 cm, semi-rigid gooseneck arm, broadcast quality microphone, with bi-color illuminated ring, built-in windshield, 5pin plug, for HCS-3900, HCS-4100, HCS-4800, HCS-5300, HCS-8300 and HCS-8600 series, black).....	M.9
MS47EGA1S	Stem Microphone (47 cm, semi-rigid gooseneck arm, broadcast quality microphone, with bi-color illuminated ring, built-in windshield, 5pin plug, for HCS-3900, HCS-4100, HCS-4800, HCS-5300, HCS-8300 and HCS-8600 series, silver).....	M.9
MS47EGA1B	Stem Microphone (47 cm, semi-rigid gooseneck arm, broadcast quality microphone, with bi-color illuminated ring, built-in windshield, 5pin plug, for HCS-3900, HCS-4100, HCS-4800, HCS-5300, HCS-8300 and HCS-8600 series, black).....	M.9
MS33EGB1S	Stem Microphone (33 cm, semi-rigid gooseneck arm, broadcast quality microphone, with bi-color illuminated ring, built-in windshield, 5pin plug, for HCS-3900, HCS-4100, HCS-4800, HCS-5300, HCS-8300 and HCS-8600 series, champagne).....	M.10
MS33EGB1B	Stem Microphone (33 cm, semi-rigid gooseneck arm, broadcast quality microphone, with bi-color illuminated ring, built-in windshield, 5pin plug, for HCS-3900, HCS-4100, HCS-4800, HCS-5300, HCS-8300 and HCS-8600 series, black).....	M.10
MS41EGB1S	Stem Microphone (41 cm, semi-rigid gooseneck arm, broadcast quality microphone, with bi-color illuminated ring, built-in windshield, 5pin plug, for HCS-3900, HCS-4100, HCS-4800, HCS-5300, HCS-8300 and HCS-8600 series, champagne).....	M.10
MS41EGB1B	Stem Microphone (41 cm, semi-rigid gooseneck arm, broadcast quality microphone, with bi-color illuminated ring, built-in windshield, 5pin plug, for HCS-3900, HCS-4100, HCS-4800, HCS-5300, HCS-8300 and HCS-8600 series, black).....	M.10
MS47EGB1S	Stem Microphone (47 cm, semi-rigid gooseneck arm, broadcast quality microphone, with bi-color illuminated ring, built-in windshield, 5pin plug, for HCS-3900, HCS-4100, HCS-4800, HCS-5300, HCS-8300 and HCS-8600 series, champagne).....	M.10
MS47EGB1B	Stem Microphone (47 cm, semi-rigid gooseneck arm, broadcast quality microphone, with bi-color illuminated ring, built-in windshield, 5pin plug, for HCS-3900, HCS-4100, HCS-4800, HCS-5300, HCS-8300 and HCS-8600 series, black).....	M.10
MS33EGE1S	Stem Microphone (33 cm, semi-rigid gooseneck arm, with bi-color illuminated ring, built-in windshield, 5pin plug, for HCS-3900, HCS-4100, HCS-4800, HCS-5300, HCS-8300 and HCS-8600 series, champagne).....	M.11
MS33EGE1B	Stem Microphone (33 cm, semi-rigid gooseneck arm, with bi-color illuminated ring, built-in windshield, 5pin plug, for HCS-3900, HCS-4100, HCS-4800, HCS-5300, HCS-8300 and HCS-8600 series, black)...	M.11
MS41EGE1S	Stem Microphone (41 cm, semi-rigid gooseneck arm, with bi-color illuminated ring, built-in windshield, 5pin plug, for HCS-3900, HCS-4100, HCS-4800, HCS-5300, HCS-8300 and HCS-8600 series, champagne).....	M.11
MS41EGE1B	Stem Microphone (41 cm, semi-rigid gooseneck arm, with bi-color illuminated ring, built-in windshield, 5pin plug, for HCS-3900, HCS-4100, HCS-4800, HCS-5300, HCS-8300, HCS-8600 series, black).....	M.11

MS47EGE1S	Stem Microphone (47 cm, semi-rigid gooseneck arm, with bi-color illuminated ring, built-in windshield, 5pin plug, for HCS-3900, HCS-4100, HCS-4800, HCS-5300, HCS-8300 and HCS-8600 series, champagne).....	M.11
MS47EGE1B	Stem Microphone (47 cm, semi-rigid gooseneck arm, with bi-color illuminated ring, built-in windshield, 5pin plug, for HCS-3900, HCS-4100, HCS-4800, HCS-5300, HCS-8300, HCS-8600 series, black).....	M.11

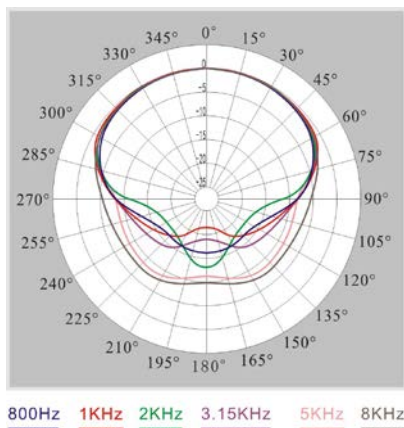
# MSxxEGF1 Stem Microphone



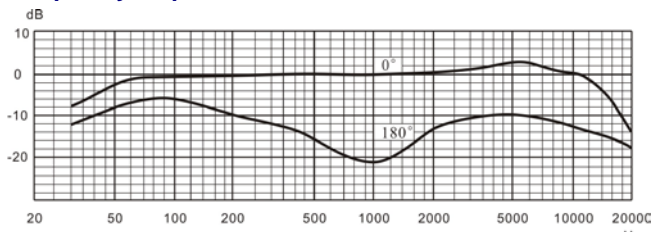
## Features

- With semi-rigid gooseneck arm, 5pin plug
- Broadcast quality microphone
- With bi-color illuminated ring (green/red)
- With lockable windshield
- For HCS-3900, HCS-4100, HCS-4800, HCS-5300, HCS-8300, HCS-8600 congress unit

## Polar pattern



## Frequency response



## Technical Specifications

### Electrical

Transducer.....Electret-condenser  
 Polar pattern.....Uni-directional  
 Operating voltage.....5 VDC  
 Sensitivity.....-46 dBA at 680 Ohm (0 dB = 1 V/Pa at 1 kHz)  
 Frequency response.....50 Hz to 20 kHz  
 Input impedance.....2 kOhm  
 Directivity 0°/180°.....> 20 dB (1 kHz)  
 Equivalent noise.....20 dBA (SPL)  
 Maximum sound pressure level.....125 dB (THD<3%)

### Mechanical

Length.....33 cm, 41 cm, 47 cm  
 Weight.....81 g, 86 g, 94 g  
 Color.....Silver (PANTONE 401 C) / Black (PANTONE 419 C)

## Ordering Information

MS33EGF1S.....Stem Microphone (33 cm, semi-rigid gooseneck arm, broadcast quality microphone, with bi-color illuminated ring and lockable windshield, 5pin plug, for HCS-3900, HCS-4100, HCS-4800, HCS-5300, HCS-8300 and HCS-8600 series, silver)

MS33EGF1B.....Stem Microphone (33 cm, semi-rigid gooseneck arm, broadcast quality microphone, with bi-color illuminated ring and lockable windshield, 5pin plug, for HCS-3900, HCS-4100, HCS-4800, HCS-5300, HCS-8300 and HCS-8600 series, black)

MS41EGF1S.....Stem Microphone (41 cm, semi-rigid gooseneck arm, broadcast quality microphone, with bi-color illuminated ring and lockable windshield, 5pin plug, for HCS-3900, HCS-4100, HCS-4800, HCS-5300, HCS-8300 and HCS-8600 series, silver)

MS41EGF1B.....Stem Microphone (41 cm, semi-rigid gooseneck arm, broadcast quality microphone, with bi-color illuminated ring and lockable windshield, 5pin plug, for HCS-3900, HCS-4100, HCS-4800, HCS-5300, HCS-8300 and HCS-8600 series, black)

MS47EGF1S.....Stem Microphone (47 cm, semi-rigid gooseneck arm, broadcast quality microphone, with bi-color illuminated ring and lockable windshield, 5pin plug, for HCS-3900, HCS-4100, HCS-4800, HCS-5300, HCS-8300 and HCS-8600 series, silver)

MS47EGF1B.....Stem Microphone (47 cm, semi-rigid gooseneck arm, broadcast quality microphone, with bi-color illuminated ring and lockable windshield, 5pin plug, for HCS-3900, HCS-4100, HCS-4800, HCS-5300, HCS-8300 and HCS-8600 series, black)

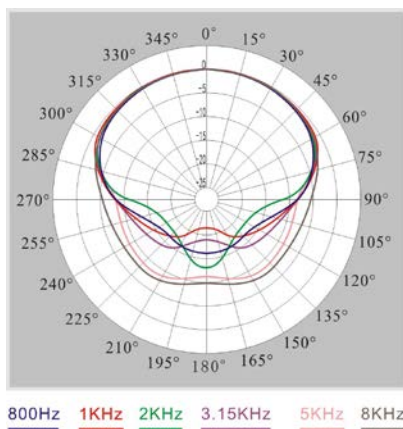
# MS33EGFS Stem Microphone



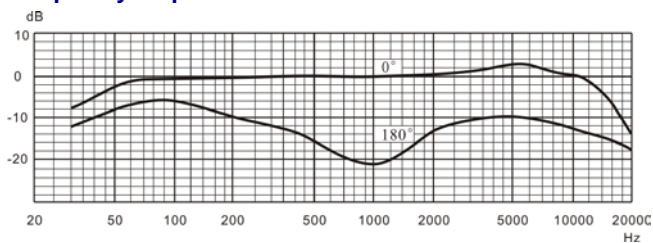
### Features

- With fully flexible gooseneck arm, 5pin plug
- Broadcast quality microphone
- With bi-color illuminated ring (green/red)
- With lockable windshield
- MS33EGFSS: for HCS-3900, HCS-4100, HCS-4800, HCS-5300, HCS-8300 and HCS-8600 congress unit
- MS33EGFSB: for HCS-3900, HCS-4100, HCS-4800, HCS-5300, HCS-8300 and HCS-8600 congress unit; for HCS-9385 RSI interpreter unit

### Polar pattern



### Frequency response



### Technical Specifications

#### Electrical

Transducer..... Electret-condenser  
 Polar pattern..... Uni-directional  
 Operating voltage..... 5 VDC  
 Sensitivity..... -46 dBA at 680 Ohm (0 dB = 1 V/Pa at 1 kHz)  
 Frequency response..... 50 Hz to 20 kHz  
 Input impedance..... 2 kOhm  
 Directivity 0°/180°..... > 20 dB (1 kHz)  
 Equivalent noise..... 20 dBA (SPL)  
 Maximum sound pressure level..... 125 dB (THD<3%)

#### Mechanical

Length..... 33 cm  
 Color..... Silver (PANTONE 401 C) / Black (PANTONE 419 C)

### Ordering Information

- MS33EGFSS..... Stem Microphone (33 cm, fully flexible gooseneck arm, broadcast quality microphone, with bi-color illuminated ring and lockable windshield, 5pin plug, for HCS-3900, HCS-4100, HCS-4800, HCS-5300, HCS-8300 and HCS-8600 series, silver)
- MS33EGFSB..... Stem Microphone (33 cm, fully flexible gooseneck arm, broadcast quality microphone, with bi-color illuminated ring and lockable windshield, 5pin plug, for HCS-3900, HCS-4100, HCS-4800, HCS-5300, HCS-8300, HCS-8600 series and HCS-9385 RSI interpreter unit, black)

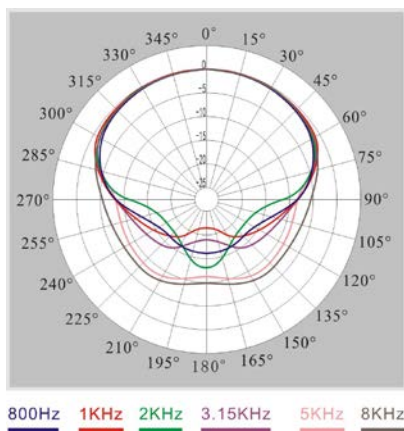
# MSxxEGF2B Stem Microphone



### Features

- With dual-flex gooseneck arm, 5pin plug
- Broadcast quality microphone
- With bi-color illuminated ring (green/red)
- With lockable windshield
- For HCS-3900, HCS-4100, HCS-4800, HCS-5300, HCS-8300 and HCS-8600 congress unit

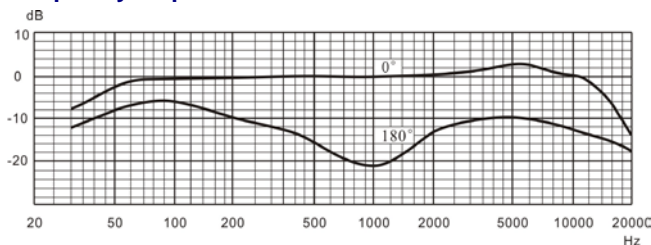
### Polar pattern



### Ordering Information

- MS50EGF2B.....Stem Microphone (50 cm, dual-flex gooseneck arm, broadcast quality microphone, with bi-color illuminated ring and lockable windshield, 5pin plug, for HCS-3900, HCS-4100, HCS-4800, HCS-5300, HCS-8300, and HCS-8600 series, black)
- MS60EGF2B.....Stem Microphone (60 cm, dual-flex gooseneck arm, broadcast quality microphone, with bi-color illuminated ring and lockable windshield, 5pin plug, for HCS-3900, HCS-4100, HCS-4800, HCS-5300, HCS-8300 and HCS-8600 series, black)
- MS70EGF2B.....Stem Microphone (70 cm, dual-flex gooseneck arm, broadcast quality microphone, with bi-color illuminated ring and lockable windshield, 5pin plug, for HCS-3900, HCS-4100, HCS-4800, HCS-5300, HCS-8300 and HCS-8600 series, black)

### Frequency response



### Technical Specifications

#### Electrical

Transducer.....Electret-condenser  
 Polar pattern.....Uni-directional  
 Operating voltage.....5 VDC  
 Sensitivity.....-46 dBA at 680 Ohm (0 dB = 1 V/Pa at 1 kHz)  
 Frequency response.....50 Hz to 20 kHz  
 Input impedance.....2 kOhm  
 Directivity 0°/180°.....> 20 dB (1 kHz)  
 Equivalent noise.....20 dBA (SPL)  
 Maximum sound pressure level.....125 dB (THD<3%)

#### Mechanical

Length.....50 cm, 60 cm, 70 cm  
 Color.....Black (PANTONE 419 C)

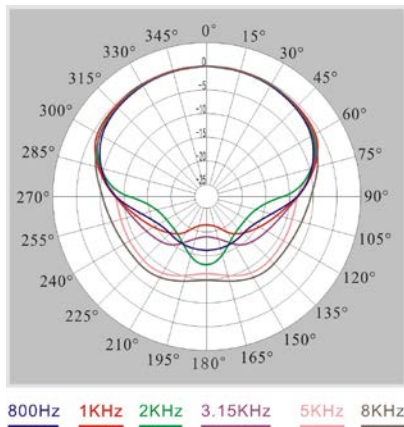
# MSxxEGG1B Stem Microphone



### Features

- With semi-rigid gooseneck arm, 5pin plug
- Broadcast quality microphone
- With bi-color illuminated ring (green/red)
- With lockable windshield
- For HCS-3900, HCS-4100, HCS-4800, HCS-5300, HCS-8300, and HCS-8600 congress unit

### Polar pattern



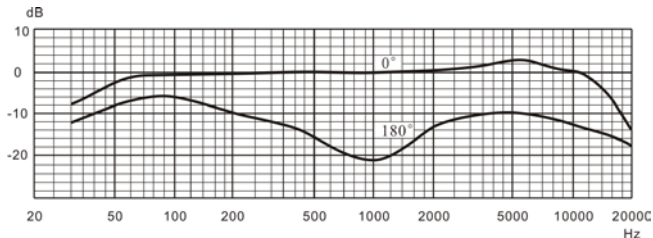
### Ordering Information

MS33EGG1B.....Stem Microphone (33 cm, semi-rigid gooseneck arm, broadcast quality microphone, with bi-color illuminated ring and lockable windshield, 5pin plug, for HCS-3900, HCS-4100, HCS-4800, HCS-5300, HCS-8300 and HCS-8600 series, black)

MS41EGG1B.....Stem Microphone (41 cm, semi-rigid gooseneck arm, broadcast quality microphone, with bi-color illuminated ring and lockable windshield, 5pin plug, for HCS-3900, HCS-4100, HCS-4800, HCS-5300, HCS-8300 and HCS-8600 series, black)

MS47EGG1B.....Stem Microphone (47 cm, semi-rigid gooseneck arm, broadcast quality microphone, with bi-color illuminated ring and lockable windshield, 5pin plug, for HCS-3900, HCS-4100, HCS-4800, HCS-5300, HCS-8300 and HCS-8600 series, black)

### Frequency response



### Technical Specifications

#### Electrical

Transducer.....Electret-condenser  
 Polar pattern.....Uni-directional  
 Operating voltage.....5 VDC  
 Sensitivity.....-46 dBA at 680 Ohm (0 dB = 1 V/Pa at 1 kHz)  
 Frequency response.....50 Hz to 20 kHz  
 Input impedance.....2 kOhm  
 Directivity 0°/180°.....> 20 dB (1 kHz)  
 Equivalent noise.....20 dBA (SPL)  
 Maximum sound pressure level.....125 dB (THD<3%)

#### Mechanical

Length.....33 cm, 41 cm, 47 cm  
 Weight.....81 g, 86 g, 94 g  
 Color.....Black (PANTONE 419 C)



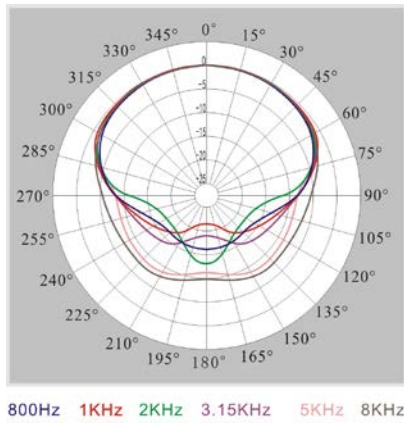
# MSxxEHA1B Stem Microphone



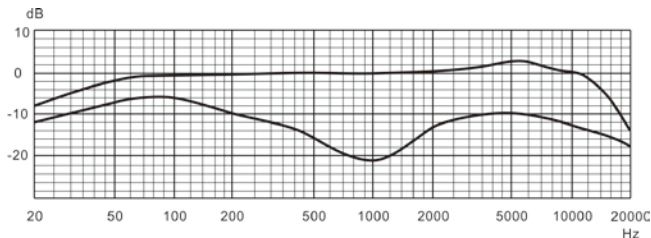
## Features

- With semi-rigid gooseneck arm, 5pin plug
- Broadcast quality microphone
- 14 mm uni-directional electret condenser microphone
- With bi-color illuminated ring (green/red)
- With windshield
- For HCS-3900, HCS-4100, HCS-4800, HCS-5300, HCS-8300 and HCS-8600 series congress unit

## Polar pattern



## Frequency response



## Technical Specifications

### Electrical

Transducer.....Electret-condenser  
 Polar pattern.....Uni-directional  
 Operating voltage.....5 VDC  
 Sensitivity.....-37 dBA at 680 Ohm (0 dB = 1 V/Pa at 1 kHz)  
 Frequency response.....20 Hz to 20 kHz  
 Input impedance.....2 kOhm  
 Directivity 0°/180°.....> 20 dB (1 kHz)  
 Equivalent noise.....20 dBA (SPL)  
 Maximum sound pressure level.....110 dB (THD<3%)

### Mechanical

Length.....33 cm, 41 cm, 47 cm  
 Weight.....110 g, 117 g, 124 g  
 Color.....Black (PANTONE 419 C)

## Ordering Information

MS33EHA1B.....Stem Microphone (33 cm, semi-rigid gooseneck arm, broadcast quality microphone, 14 mm uni-directional electret condenser microphone, with bi-color illuminated ring and windshield, 5pin plug, for HCS-3900, HCS-4100, HCS-4800, HCS-5300, HCS-8300 and HCS-8600 series, black)

MS41EHA1B.....Stem Microphone (41 cm, semi-rigid gooseneck arm, broadcast quality microphone, 14 mm uni-directional electret condenser microphone, with bi-color illuminated ring and windshield, 5pin plug, for HCS-3900, HCS-4100, HCS-4800, HCS-5300, HCS-8300 and HCS-8600 series, black)

MS47EHA1B.....Stem Microphone (47 cm, semi-rigid gooseneck arm, broadcast quality microphone, 14 mm uni-directional electret condenser microphone, with bi-color illuminated ring and windshield, 5pin plug, for HCS-3900, HCS-4100, HCS-4800, HCS-5300, HCS-8300 and HCS-8600 series, black)

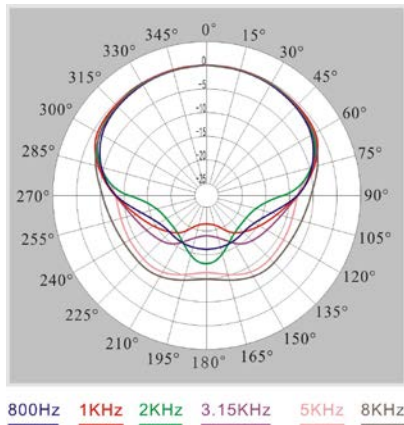
# MSxxEGA1 Stem Microphone



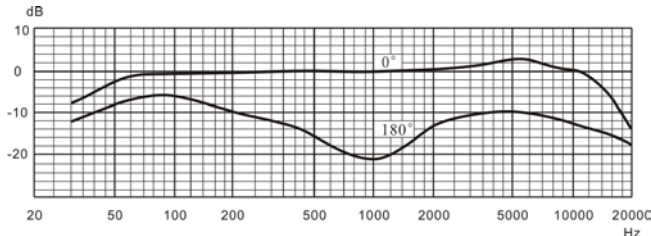
## Features

- With semi-rigid gooseneck arm, 5pin plug
- Broadcast quality microphone
- With bi-color illuminated ring (green/red)
- Build-in windshield
- For HCS-3900, HCS-4100, HCS-4800, HCS-5300, HCS-8300 and HCS-8600 series congress unit

## Polar pattern



## Frequency response



## Technical Specifications

### Electrical

Transducer.....Electret-condenser  
 Polar pattern.....Uni-directional  
 Operating voltage.....5 VDC  
 Sensitivity.....-46 dBA at 680 Ohm (0 dB = 1 V/Pa at 1 kHz)  
 Frequency response.....50 Hz to 20 kHz  
 Input impedance.....2 kOhm  
 Directivity 0°/180°.....> 20 dB (1 kHz)  
 Equivalent noise.....20 dBA (SPL)  
 Maximum sound pressure level.....125 dB (THD<3%)

### Mechanical

Length.....33 cm, 41 cm, 47 cm  
 Weight.....88 g, 95 g, 100 g  
 Color.....Silver (PANTONE 428 C) / Black (PANTONE 419 C)

## Ordering Information

- MS33EGA1S..... Stem Microphone (33 cm, semi-rigid gooseneck arm, broadcast quality microphone, with bi-color illuminated ring, built-in windshield, 5pin plug, for HCS-3900, HCS-4100, HCS-4800, HCS-5300, HCS-8300 and HCS-8600 series, silver)
- MS33EGA1B..... Stem Microphone (33 cm, semi-rigid gooseneck arm, broadcast quality microphone, with bi-color illuminated ring, built-in windshield, 5pin plug, for HCS-3900, HCS-4100, HCS-4800, HCS-5300, HCS-8300 and HCS-8600 series, black)
- MS41EGA1S..... Stem Microphone (41 cm, semi-rigid gooseneck arm, broadcast quality microphone, with bi-color illuminated ring, built-in windshield, 5pin plug, for HCS-3900, HCS-4100, HCS-4800, HCS-5300, HCS-8300 and HCS-8600 series, silver)
- MS41EGA1B..... Stem Microphone (41 cm, semi-rigid gooseneck arm, broadcast quality microphone, with bi-color illuminated ring, built-in windshield, 5pin plug, for HCS-3900, HCS-4100, HCS-4800, HCS-5300, HCS-8300 and HCS-8600 series, black)
- MS47EGA1S..... Stem Microphone (47 cm, semi-rigid gooseneck arm, broadcast quality microphone, with bi-color illuminated ring, built-in windshield, 5pin plug, for HCS-3900, HCS-4100, HCS-4800, HCS-5300, HCS-8300 and HCS-8600 series, silver)
- MS47EGA1B..... Stem Microphone (47 cm, semi-rigid gooseneck arm, broadcast quality microphone, with bi-color illuminated ring, built-in windshield, 5pin plug, for HCS-3900, HCS-4100, HCS-4800, HCS-5300, HCS-8300 and HCS-8600 series, black)

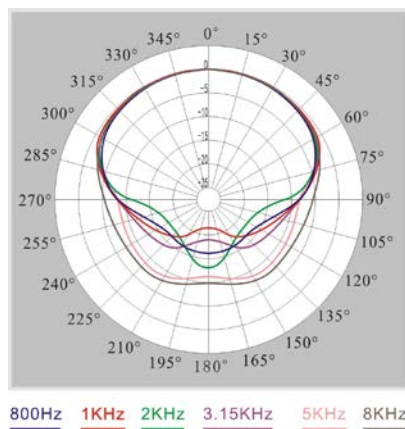
# MSxxEGB1 Stem Microphone



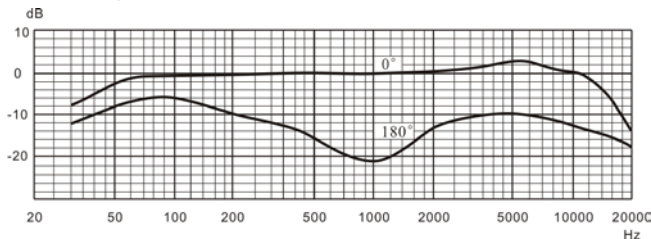
## Features

- With semi-rigid gooseneck arm, 5pin plug
- Broadcast quality microphone
- With bi-color illuminated ring (green/red)
- Built-in windshield
- For HCS-3900, HCS-4100, HCS-4800, HCS-5300, HCS-8300 and HCS-8600 congress unit

## Polar pattern



## Frequency response



## Technical Specifications

### Electrical

Transducer.....Electret-condenser  
 Polar pattern.....Uni-directional  
 Operating voltage.....5 VDC  
 Sensitivity.....-46 dBA at 680 Ohm (0 dB = 1 V/Pa at 1 kHz)  
 Frequency response.....50 Hz to 20 kHz  
 Input impedance.....2 kOhm  
 Directivity 0°/180°.....> 20 dB (1 kHz)  
 Equivalent noise.....20 dBA (SPL)  
 Maximum sound pressure level.....125 dB (THD<3%)

### Mechanical

Length.....33 cm, 41 cm, 47 cm  
 Weight.....90 g, 97 g, 102 g  
 Color.....Champagne (PANTONE 401 C) / Black (PANTONE 419 C)

## Ordering Information

- MS33EGB1S..... Stem Microphone (33 cm, semi-rigid gooseneck arm, broadcast quality microphone, with bi-color illuminated ring, built-in windshield, 5pin plug, for HCS-3900, HCS-4100, HCS-4800, HCS-5300, HCS-8300 and HCS-8600 series, champagne)
- MS33EGB1B..... Stem Microphone (33 cm, semi-rigid gooseneck arm, broadcast quality microphone, with bi-color illuminated ring, built-in windshield, 5pin plug, for HCS-3900, HCS-4100, HCS-4800, HCS-5300, HCS-8300 and HCS-8600 series, black)
- MS41EGB1S..... Stem Microphone (41 cm, semi-rigid gooseneck arm, broadcast quality microphone, with bi-color illuminated ring, built-in windshield, 5pin plug, for HCS-3900, HCS-4100, HCS-4800, HCS-5300, HCS-8300 and HCS-8600 series, champagne)
- MS41EGB1B..... Stem Microphone (41 cm, semi-rigid gooseneck arm, broadcast quality microphone, with bi-color illuminated ring, built-in windshield, 5pin plug, for HCS-3900, HCS-4100, HCS-4800, HCS-5300, HCS-8300 and HCS-8600 series, black)
- MS47EGB1S..... Stem Microphone (47 cm, semi-rigid gooseneck arm, broadcast quality microphone, with bi-color illuminated ring, built-in windshield, 5pin plug, for HCS-3900, HCS-4100, HCS-4800, HCS-5300, HCS-8300 and HCS-8600 series, champagne)
- MS47EGB1B..... Stem Microphone (47 cm, semi-rigid gooseneck arm, broadcast quality microphone, with bi-color illuminated ring, built-in windshield, 5pin plug, for HCS-3900, HCS-4100, HCS-4800, HCS-5300, HCS-8300 and HCS-8600 series, black)

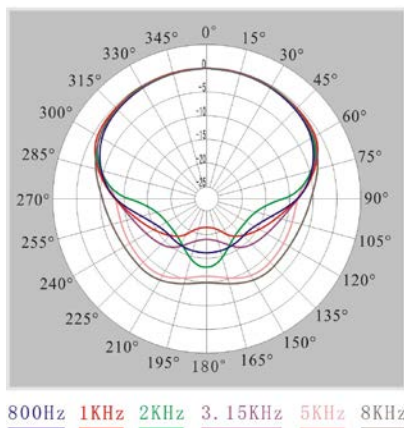
# MSxxEGE1 Stem Microphone



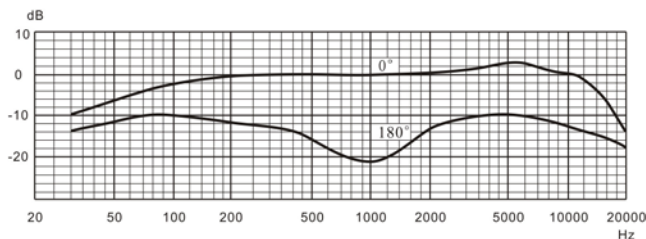
## Features

- With semi-rigid gooseneck arm, 5pin plug
- Broadcast quality microphone
- With bi-color illuminated ring (green/red)
- Built-in windshield
- For HCS-3900, HCS-4100, HCS-4800, HCS-5300, HCS-8300, and HCS-8600 series congress unit

## Polar pattern



## Frequency response



## Technical Specifications

### Electrical

Transducer..... Electret-condenser  
 Polar pattern..... Uni-directional  
 Operating voltage..... 5 VDC  
 Sensitivity..... -46 dBA at 680 Ohm (0 dB = 1 V/Pa at 1 kHz)  
 Frequency response..... 50 Hz to 20 kHz  
 Input impedance..... 2 kOhm  
 Directivity 0°/180°..... > 20 dB (1 kHz)  
 Equivalent noise..... 20 dBA (SPL)  
 Maximum sound pressure level..... 125 dB (THD<3%)

### Mechanical

Length..... 33 cm, 41 cm, 47 cm  
 Weight..... 88 g, 95 g, 100 g  
 Color.... Champagne (PANTONE 401 C) / Black (PANTONE 419 C)

## Ordering Information

- MS33EGE1S..... Stem Microphone (33 cm, semi-rigid gooseneck arm, with bi-color illuminated ring, built-in windshield, 5pin plug, for HCS-3900, HCS-4100, HCS-4800, HCS-5300, HCS-8300 and HCS-8600 series, champagne)
- MS33EGE1B..... Stem Microphone (33 cm, semi-rigid gooseneck arm, with bi-color illuminated ring, built-in windshield, 5pin plug, for HCS-3900, HCS-4100, HCS-4800, HCS-5300, HCS-8300 and HCS-8600 series, black)
- MS41EGE1S..... Stem Microphone (41 cm, semi-rigid gooseneck arm, with bi-color illuminated ring, built-in windshield, 5pin plug, for HCS-3900, HCS-4100, HCS-4800, HCS-5300, HCS-8300 and HCS-8600 series, champagne)
- MS41EGE1B..... Stem Microphone (41 cm, semi-rigid gooseneck arm, with bi-color illuminated ring, built-in windshield, 5pin plug, for HCS-3900, HCS-4100, HCS-4800, HCS-5300, HCS-8300 and HCS-8600 series, black)
- MS47EGE1S..... Stem Microphone (47 cm, semi-rigid gooseneck arm, with bi-color illuminated ring, built-in windshield, 5pin plug, for HCS-3900, HCS-4100, HCS-4800, HCS-5300, HCS-8300 and HCS-8600 series, champagne)
- MS47EGE1B..... Stem Microphone (47 cm, semi-rigid gooseneck arm, with bi-color illuminated ring, built-in windshield, 5pin plug, for HCS-3900, HCS-4100, HCS-4800, HCS-5300, HCS-8300 and HCS-8600 series, black)