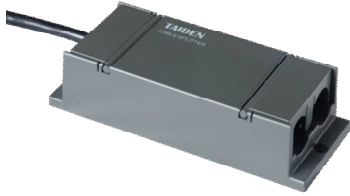


## HCS-4853T Cable Splitter



---

### Features

- Relay facility, amplification of the communication signals
- "1 in / 3 out " structure for connection
- For connection between HCS-8685 Interpretation Unit and HCS-8300M series, HCS-4100M/50 series, HCS-5100MA/B series
- 2m-cable with a 6P-DIN connector at the input end
- Three 8PIN output interfaces, can drive 60-meter long extension cable
- Dimensions (h × w × d): 35 × 149 × 90 mm

---

### Ordering Information

HCS-4853T.....6-pin to 8-pin Cable Splitter (1 input (6P-DIN) & 3 outputs (8P-DIN), for connection between HCS-8685 Interpretation Unit and HCS-8300M series, HCS-4100M/50 series, HCS-5100MA/B series)